

NUCTECH™ XT2080AD

X-ray CT Inspection System



Introduction

NUCTECH™ XT2080AD is a newly developed CT (Computed Tomography) inspection system developed by NUCTECH COMPANY LIMITED. The system innovatively combines NUCTECH's dual-energy material discrimination technology with the spiral CT technology together. With multidimensional information acquired by the system, it realizes automated explosives/ narcotics detection and alarm with higher probability of detection and lower false alarm rate.

Designed with a larger tunnel size and a higher throughput, the XT2080AD is an ideal security solution for airports, customs, stations, governmental buildings, public activities, etc.



EN

WWW.NUCTECH.COM

Technical Features

- **Broadest Inspection Range**

Automated detection of various contraband like explosives and narcotics, satisfying security needs for airports, customs, etc.

- **Exclusive Dual-Energy Material Discrimination Technology**

Discriminating different materials with higher probability of detection and lower false alarm rate, which has achieved CAAC certification and the ECAC for EDS standard 3.

- **High-resolution 3D Images**

Inspecting objects in 360 degrees free of blind corners and identifying the contraband more easily with a more intuitive image.

- **Distinct CT Slice Images**

Easier to detect the contraband concealed in interlayers or placed in a particular angle.

- **Independent Dual-Energy Inspection System**

Generating high-resolution DR images and identifying tiny thin objects like matches and lighter cores.

- **Powerful Network Management**

Realizing remote resolutions, operations and diagnoses and sharing the data between different areas with the help of cloud computing technology.

- **Innovative Software Functions**

Exclusively providing 3D image processing functions such as 3D measurement, 3D mark, 3D super penetration, etc., helping making decisions more effectively and efficiently.

- **Accurate and Abundant Color Information**

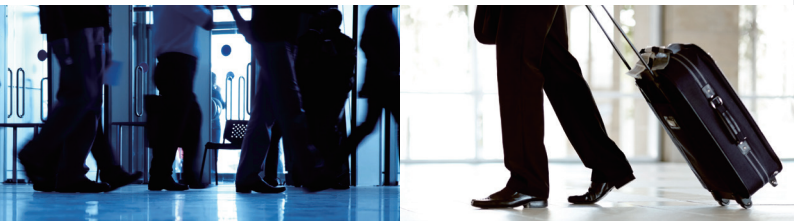
With the dual-energy CT technology, material information is acquired to colorize different materials with different colors in 3D images.

- **Practical 3D TIP (Threat Image Projection) Function**

Overcoming the obstacle of TIP in 3D images and providing effective methods for training and evaluating operators.

- **Convenient Maintenance Design**

Modular design enables easy replacement of key components and convenient maintenance, reducing time and labor.



Technical Data

General Specifications

Tunnel Dimensions	Max. Width: 754mm, Max. Height: 635mm
Max. Baggage Size	2000mm(L)×750mm(W)×410mm(H)
Conveyor Height	675mm
Conveyor Load	200kg(even distributed)
Throughput	860 BPH
Wire Resolution	40 AWG
DR Steel Penetration	40mm
CT Spatial Resolution	2mm line pair
Display Monitor	Color monitor / High resolution of 1920×1080

X-ray Generator

Anode Voltage	160kV
Cooling / Duty Cycle	Sealed oil bath / 100%

Image Processing System

DR Image Processing	Color/BW, Negative, Edge enhancement, General enhancement, Organic stripping, Inorganic stripping, High-energy Penetration, Pseudo-color, etc.
3D Image Processing	Color/BW, Negative, Edge enhancement, Super penetration, Organic stripping, Inorganic stripping, 3D mark, 3D measurement, Threat single display, etc.
ROI% Zoom	Selectable image zoom regions, 1 ~ 64 times enlargement
Data Storage Capacity	Over 10,000 images

Health and Safety

X-ray Leakage	Conform to all the radiation protection standards recommended by IAEA, ICRP and WHO
---------------	---

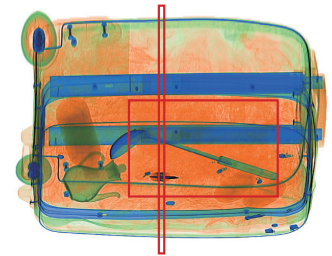
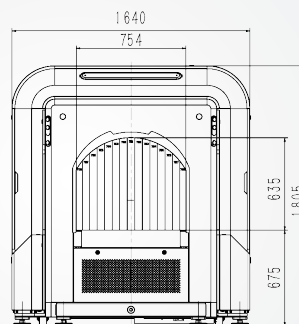
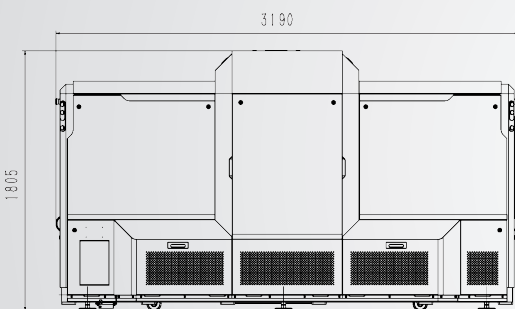
System Functions

Date/Time display, Baggage counter, User management, System-on timers, Power-on self-test, Image Storage and query, Built-in diagnosis.

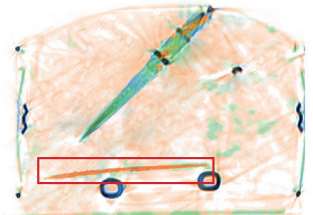
Installation Data

Dimensions / Weight	3190mm(L)×1640mm(W)×1805mm(H) / 2700kg
Operating Temperature / Humidity	0°C ~ +40°C / 5% ~ 95%(non-condensing)
Storage Temperature / Humidity	-40°C ~ +60°C / 5% ~ 95%(non-condensing)
Power Supply	Single phase, 220/110VAC(-15% ~ 10%), 50Hz/60Hz±3Hz
Power Consumption	3.3kVA

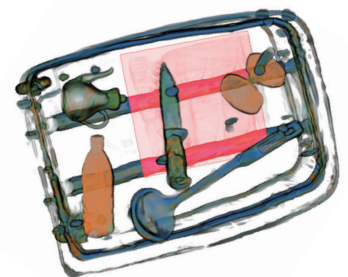
Note : DR Image performance specifications above are based on the tester complying with GB15208.2-2006.



DR Image



CT Slice Image



3D Image

NUCTECH COMPANY LIMITED

Address: 2/F Block A, Tongfang Building, Shuangjinglu, Haidian District, Beijing 100084, P.R.China

Tel: +8610 50980999
Fax: +8610 62788896
Http: //www.nuctech.com

NUCTECH HONG KONG COMPANY LIMITED

Address: Rooms 1403-04 on the 14th Floor of China Resources Building, No.26 Harbour Road, Wanchai, Hong Kong
Tel: +852-27221828 Fax: +852-27221849

NUCTECH SYDNEY PTY LTD.

Address: Suite 404, 77 Dunning Avenue, Rosebery NSW 2018 Australia

Tel: +612 96622307/96622317
Fax: +612 96622371

NUCTECH WARSAW COMPANY LIMITED SP. Z O. O.

Address: ul. Pandy 18, 02-202 Warsaw Poland
Tel: +48 22 6591545 Fax: +48 22 6581483

NUCTECH COMPANY LIMITED (VENEZUELA BRANCH)

Address: Av. San Juan Bosco, Entre 2da y 3ra Transversal, Centro Altamira, Piso 14, Ofc."C", Caracas, Venezuela

Tel: +58212 261 1050/261 9074
Mobile: +58412 321 7001 Fax: +58212 261 0618

NUCTECH MIDDLE EAST FZE

Address: Office 321, Building 5WA, Dubai Airport Free Zone, P.O.Box 371820, Dubai, U.A.E

Tel: +971-4-2602308 Fax: +971-4-2602306
Email: cuiwei@nuctech.com

Nuctech South Africa (Pty) Ltd.

Address: Unit B13, 5 Galaxy Ave, Linbro Business Park, Sandton, Johannesburg, South Africa
Tel: +27 (11) 6080480 Fax: +27(11) 6080525

Follow us on Facebook and Twitter:

https://twitter.com/Nuctech_CT
https://www.facebook.com/Nuctech.CT/

SCTMD/TP-A031601-EN

Copyright©2016 NUCTECH COMPANY LIMITED, All Rights reserved.
Design and specifications are subject to change without notice.
Printed in CHINA, June 2016.



NUCTECH HAS BEEN AWARDED THE CERTIFICATE OF QUALITY MANAGEMENT SYSTEM (ISO9001:2008)
NUCTECH HAS BEEN AWARDED THE CERTIFICATE OF ENVIRONMENTAL MANAGEMENT SYSTEM (ISO14001:2004)
NUCTECH HAS BEEN AWARDED THE CERTIFICATE OF OCCUPATIONAL HEALTH AND SAFETY MANAGEMENT SYSTEM (GB/T28001-2011)

